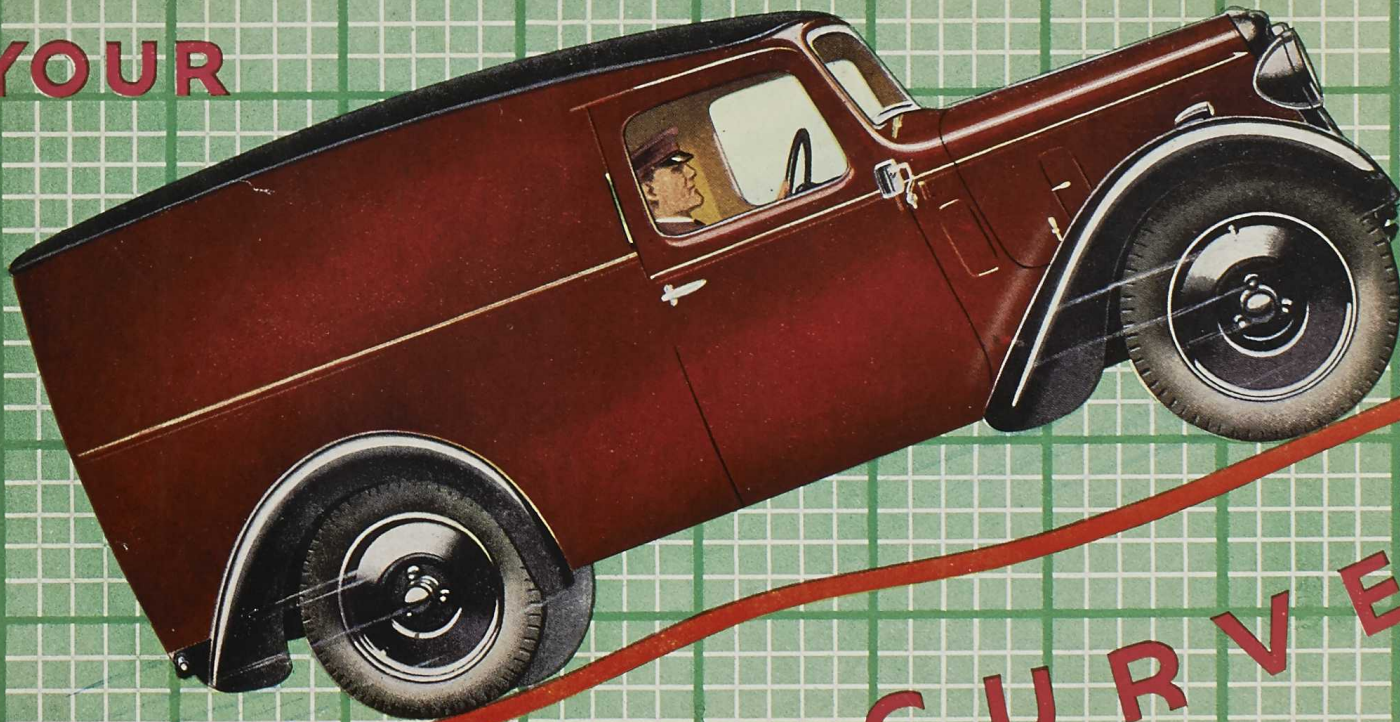


SEND UP
YOUR



SALES CURVE

WITH AN

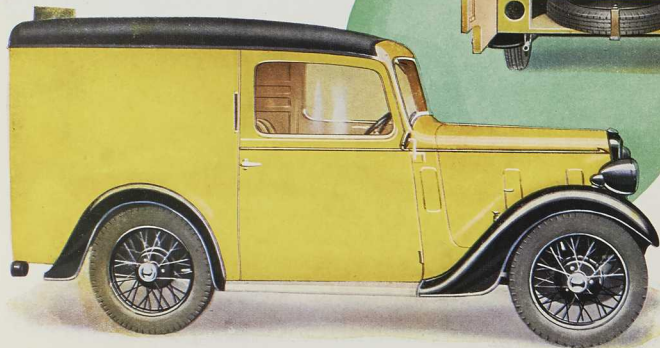
Austin

EXPRESS

DELIVERY VAN

Austin

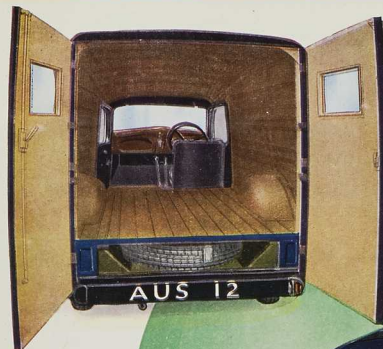
1938



The 'SEVEN'

This most economical of light vans will speedily transport loads of up to 5 cwt. Its bulk capacity is 55½ cubic feet.

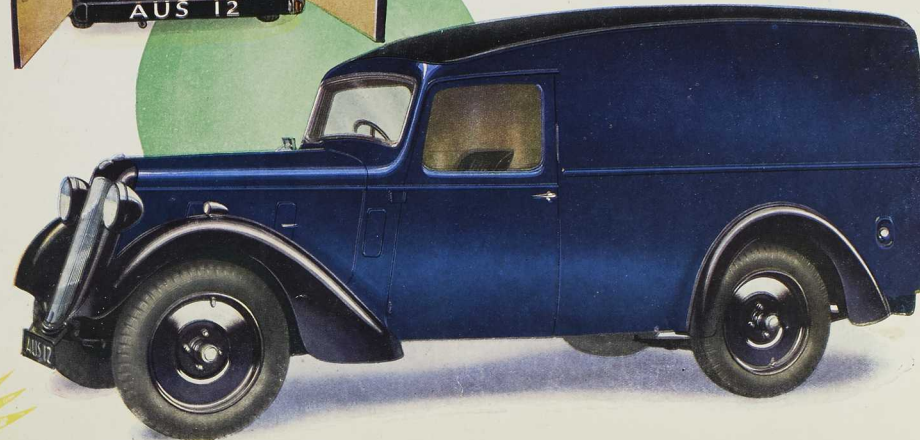
In GREY PRIMING. PRICE (At Works)
Painted in one of our five standard colours ... extra.
Additional bucket seat ... extra.



The 'TWELVE-FOUR'

The power unit of the Twelve van develops fully 33 brake horse power and handles loads of up to half a ton with ease. The attractive van body contains 118 cubic feet of storage space. The flexible suspension ensures that fragile goods are carried securely and without damage.

In GREY PRIMING. PRICE
Painted in one of our five standard colours: RED, BLUE, YELLOW, GREEN or BLACK ... extra (at Works)
Additional bucket seat ... extra
Partition behind Driver's Seat ... extra



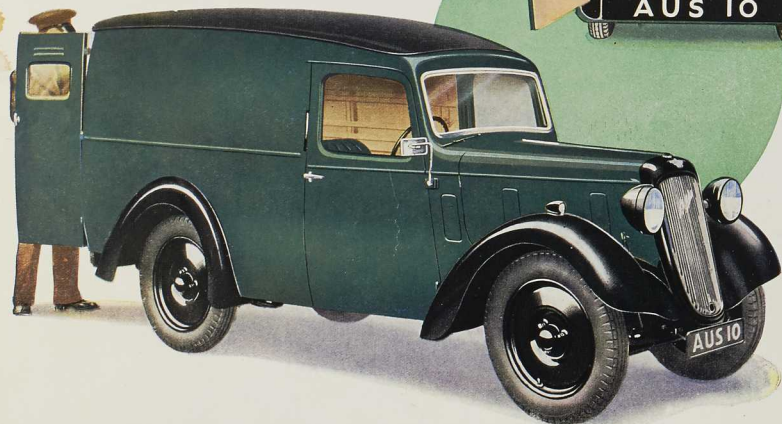
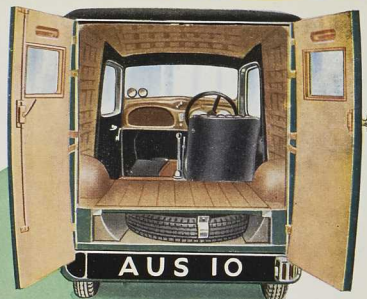
EXPRESS DELIVERY VANS

The 'TEN-FOUR'

The 6-8 cwt. Ten van has a bulk capacity of fully 88 cubic feet and the engine develops 27 b.h.p. This large capacity van is speedy and dependable and easy to control.

The body lines are attractive and the suspension is flexible.

In GREY PRIMING. PRICE
Painted in one of our five standard colours: RED, BLUE, YELLOW, GREEN or BLACK ... extra (at Works)
Additional Bucket Seat ... extra
Partition behind Driver's Seat ... extra



The 'SEVEN'

6-volt electric lighting and starting; large-dial illuminated instruments; foot-operated dip-and-switch headlamps; flush-fitting automatic return direction indicators; electric windscreen wiper; exterior driving mirror; petrol gauge; ammeter; speedometer; stop-and-tail-lamp; electric horn; spare wheel and tyre; full kit of tools stowed in special compartment; and front screen and side windows of Triplex toughened glass.

EXTERIOR DIMENSIONS

Length	10 ft. 8 ins. (3251 mm.)
Width	4 ft. 3 ins. (1295 mm.)
Height	5 ft. 8 ins. (1727 mm.)
Loading Height	1 ft. 9 ins. (533 mm.)
Cubic Capacity	55½ cu. ft. (1.57 cu. M.)

INTERIOR DIMENSIONS

Length	3 ft. 10 ins. (1168 mm.)
Width	3 ft. 11 ins. (1194 mm.)
Height	3 ft. 3½ ins. (1010 mm.)
Width between wheel arches	2 ft. 10 ins. (864 mm.)
Width of door opening	3 ft. 9 ins. (1143 mm.)
Height of door opening	3 ft. 1 in. (940 mm.)
Weight carrying capacity	5 cwt. (254 kilos)

The 'TEN-FOUR'

12-volt starting and lighting; large-dial illuminated instruments; foot-operated dip-and-switch headlamps; flush-fitting automatic return direction indicators; scuttle-mounted windscreen wiper; exterior driving mirror; petrol gauge; speedometer; ammeter; stop-and-tail-lamp; electric horn; spare wheel and tyre; full kit of tools stowed in a special compartment; and front screen and side windows of Triplex toughened glass.

EXTERIOR DIMENSIONS

Length	12 ft. 7 ins. (3835 mm.)
Width	4 ft. 9 ins. (1448 mm.)
Height	5 ft. 11½ ins. (1816 mm.)
Loading Height	1 ft. 10½ ins. (571 mm.)
Cubic Capacity	88 cu. ft. (2,490 cu. M.)

INTERIOR DIMENSIONS

Length	5 ft. 5½ ins. (1664 mm.)
Width	4 ft. 3½ ins. (1302 mm.)
Height	3 ft. 7 ins. (1092 mm.)
Width between wheel arches	3 ft. 1 in. (940 mm.)
Width of door opening	3 ft. 6 ins. (1067 mm.)
Height of door opening	3 ft. 2½ ins. (978 mm.)
Weight carrying capacity	6-8 cwt. (305-406 kilos)

The 'TWELVE-FOUR'

12-volt electric starting and lighting; instrument panel with concealed illumination; foot-operated dip-and-switch headlamps; flush-fitting automatic return direction indicators; scuttle-mounted windscreen wiper; driving mirror; petrol gauge; ammeter; speedometer; electric horn; stop-and-tail lamp; spare wheel and tyre; full kit of tools stowed in a special compartment; and front screen and side windows of Triplex toughened glass.

EXTERIOR DIMENSIONS

Length	13 ft. 10 ins. (4216 mm.)
Width	5 ft. 3½ ins. (1613 mm.)
Height	6 ft. 2 ins. (1880 mm.)
Loading Height	1 ft. 11½ ins. (597 mm.)
Cubic Capacity	118 cu. ft. (3,339 cu. M.)

INTERIOR DIMENSIONS

Length	6 ft. 2 ins. (1880 mm.)
Width	4 ft. 10 ins. (1473 mm.)
Height	3 ft. 9½ ins. (1156 mm.)
Width between wheel arches	3 ft. 5½ ins. (1060 mm.)
Width of door opening	4 ft. 1 in. (1245 mm.)
Height of door opening	3 ft. 5½ ins. (1054 mm.)
Weight carrying capacity	8-10 cwt. (406-508 kilos)

DEPENDABLE SERVICE



DAY IN AND DAY OUT!

The Demands of Modern Business

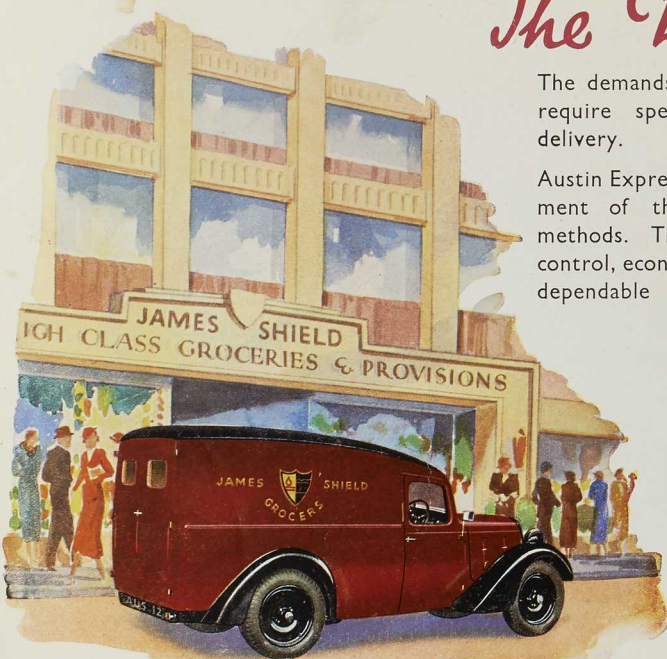
The demands of modern business methods require speedy and dependable goods delivery.

Austin Express Delivery vans are the embodiment of the most up-to-date delivery methods. They are easy to start, easy to control, economical to run and as thoroughly dependable as the name Austin implies.

The finishing touch of modern sales service—speedy and dependable delivery—is provided by these modern vans.

Their acknowledged dependability of service daily confirms their owners' wisdom in their selection, for together with this sterling quality goes efficiency, economy and freedom from the risk of delivery disorganisation.

The flowing lines of these modern vans are distinctive and attractive and the exterior panels are admirably suited for full display of the signwriter's art.



Austin
EXPRESS
DELIVERY VANS



GENERAL SPECIFICATION

	SEVEN.	TEN.	TWELVE.
Engine :			
Bore	2.2 ins. (56 mm.).	2.4995 ins. (63.5 mm.).	2.73 ins. (69.35 mm.).
Stroke	3 ins. (76 mm.).	3.5 ins. (89 mm.).	4 ins. (101.6 mm.).
C. Capacity	45.6 cu. ins. (747 cc.).	68.7 ins. (1,125 cc.).	93.6 ins. (1,535 cc.).
R.A.C. Rating	7.8.	9.996.	11.9.
No. of Bearings	3.	3.	3.
B.H.P. and R.P.M.	17 @ 3,800.	27 @ 4,000.	33 @ 3,600.
Lubrication	Forced Feed	Forced Feed	Forced Feed
Ignition	Coil.	Coil.	Coil.
Ignition Control	Automatic.	Automatic.	Automatic.
Cooling System	Thermo-Syphon and Fan.	Thermo-Syphon and Fan.	Thermo-Syphon and Fan.
Fuel Feed	Pump.	Pump.	Pump.
Fuel Tank Capacity	5.	6.	8.
Transmission.			
Clutch	Single Dry Spring Plate.	Single Dry Spring Plate.	Single Dry Spring Plate.
Gearbox :			
Type	Synchro. 2nd, 3rd and top.	Synchro. 2nd, 3rd and top.	Synchro. 2nd, 3rd and top.
Ratios	5.25, 8.73, 13.85, & 22.94.	5.25, 8.04, 12.78, & 21.10.	5.375, 8.44, 13.28, 20.37.
Rear Axle Type	$\frac{3}{4}$ Floating.	$\frac{3}{4}$ Floating.	$\frac{3}{4}$ Floating.
Final Drive	Spiral Bevel.	Spiral Bevel.	Spiral Bevel.
Steering	Hourglass Worm and Sector.	Hourglass Worm and Sector.	Hourglass Worm and Sector.
Brakes	Girling.	Girling.	Girling.
Suspension :			
Road Springs	Front : Transverse Semi-Elliptic. Rear : Quarter Elliptic.	Long Semi-Elliptic.	Long Semi-Elliptic, with Oilite Disc inserts.
Shock Absorbers	Austin Friction Type.	Luvax Hydraulic.	Luvax Hydraulic.
Tyre Size	4.00 x 18.	4.75 x 18.	5.00 x 18 (Fort at rear only)
Wheel Type	Wire	Disc.	Disc.

THE AUSTIN MOTOR COMPANY LTD.
LONGBRIDGE **BIRMINGHAM**
 Telephone—PRIORY 2101 Codes—BENTLEY
 Telegrams—"SPEEDILY, TELEX, NORTHFIELD."
479-483, OXFORD STREET, LONDON, W.1. (NEAR MARBLE ARCH)
 Telephone—MAYFAIR 7620 AND AT Telegrams—"AUSTINETTE, TELEX, LONDON."
HOLLAND PARK HALL, HOLLAND PARK AVENUE, LONDON, W.11