

AUSTIN

BRITAIN'S DEPENDABLE CAR

THE AUSTIN MOTOR COMPANY LTD.

LONGBRIDGE
BIRMINGHAM

Telephones :
Priory 2101-2120

Telegrams :
"Speedily, Northfield"
Code : Bentley's

479-483, OXFORD STREET, LONDON, W. 1
(NEAR MARBLE ARCH)

Telephone :
Mayfair 7620-7637

Telegrams :
"Austinette, Telex, London"

AND AT

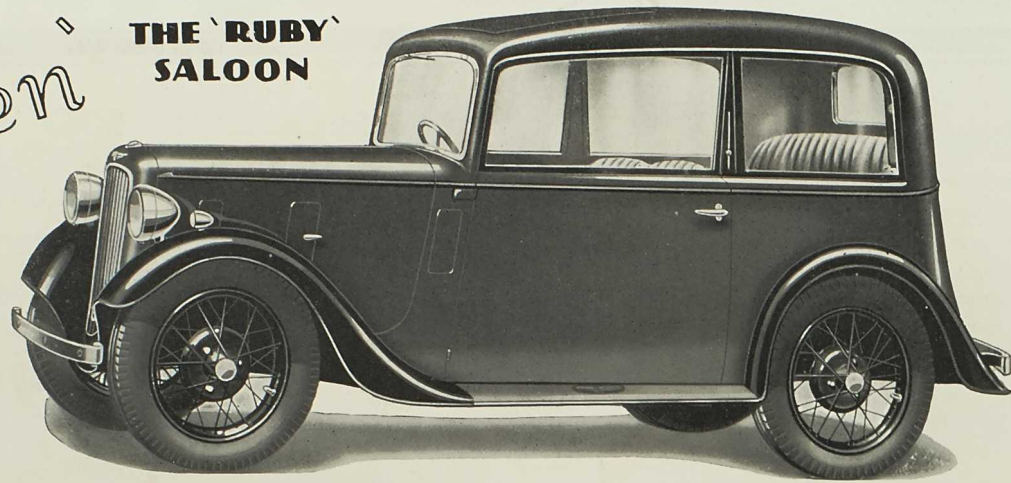
HOLLAND PARK HALL, HOLLAND PARK AVENUE,
LONDON, W. 11

\$40-
1936

The 'Seven'

The cars can be finished to choice of Austin colours and upholstered in *best quality Leather, Cloth or Moquette. There are direction indicators with automatic return, electric windscreen wiper, *interior visor, rear window blind, driving mirror, draught fume excluders, luggage carrier and straps, enclosed spare wheel and tyre, locks on doors and those accessories shown on chassis specification. All fittings chromium plated. Triplex glass in windscreen, side and rear windows.
†Not on 'Pearl'.

THE 'RUBY' SALOON



WITH 7 h.p. FOUR Cylinder Engine.

A very attractive exterior and a surprisingly roomy interior are features of this neat, efficient four-seater Saloon, which is completely equipped.

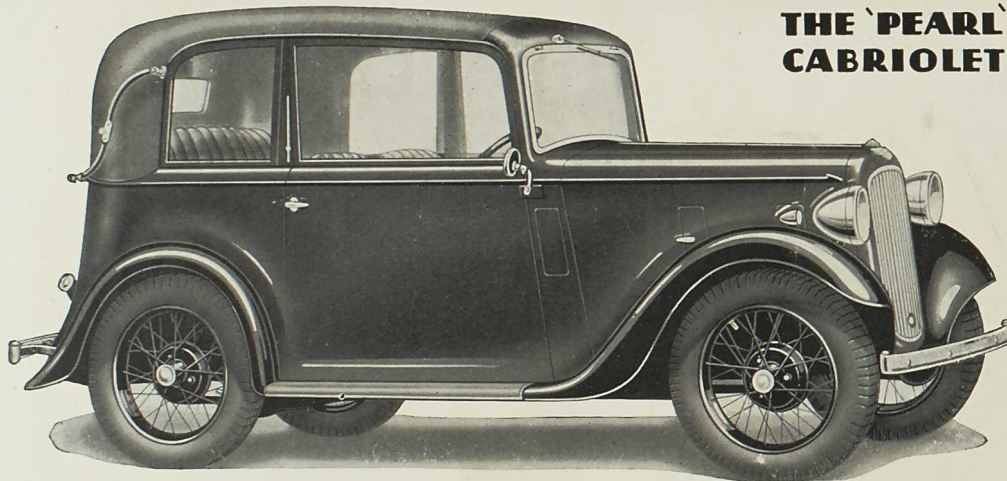
A sliding Pytchley roof adapts the car to any weather conditions, the front seats are separately adjustable and the movable rear quarter windows assist ventilation. Pneumatic cushions to all seats. The spare wheel is carried enclosed at the rear of the car. The floor is low and there are no footwells. The fixed head saloon has less expensive furnishings, black lamps with chromium plated rims, and without items*.

'RUBY' De Luxe Saloon **£125**

'RUBY' Fixed Head Saloon **£118**

Prices at Works.

THE 'PEARL' CABRIOLET



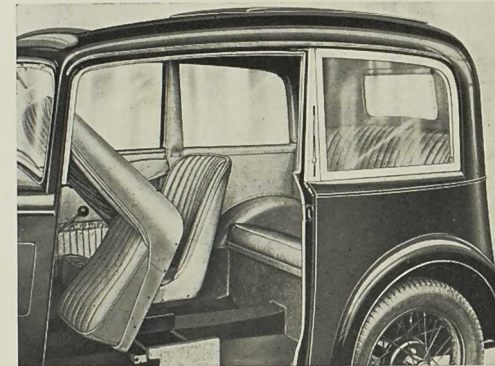
WITH 7 h.p. FOUR Cylinder Engine.

This Cabriolet has been a genuine success. Its neat well-shaped proportions attract attention. The pneumatic cushioned upholstery provides full seating accommodation for four persons—the front seats are separately adjustable. The roof is easily opened or closed and can be fixed in either of two open positions.

The small quarter lights can be opened to assist ventilation. The large windows in the doors are quickly raised or lowered.

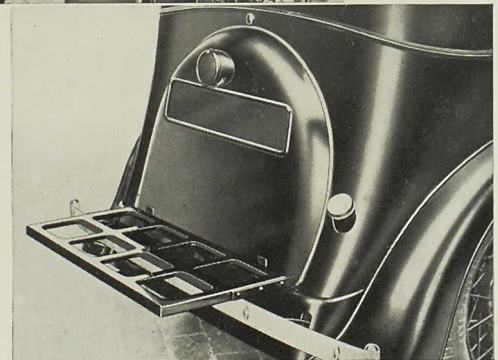
'PEARL' Cabriolet - - **£128**

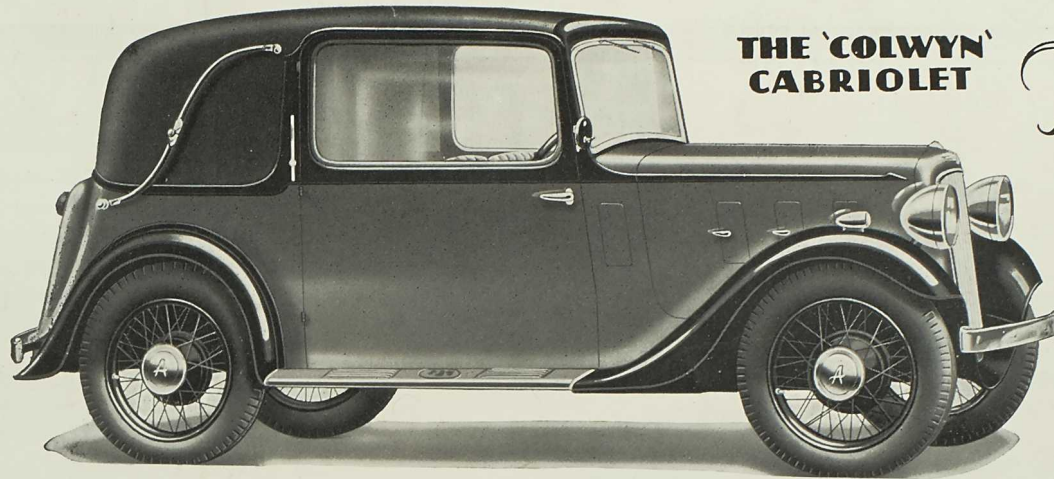
Price at Works.



Above, interior of 'Ruby' Saloon, showing tip-up front seat.

On right, luggage carrier extended ready for use.





THE 'COLWYN' CABRIOLET

The 'Ten-Four'

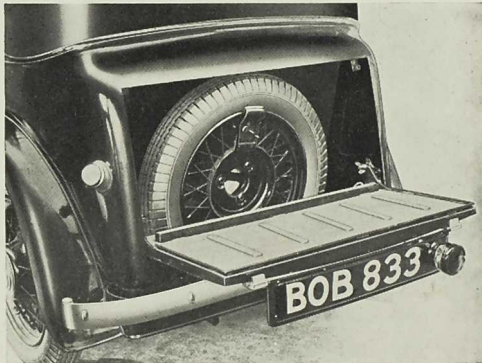
The cars can be finished to choice of Austin colours and upholstered in *Bedford Cord, *Moquette, or *best quality Leather. There are electric twin-blade windscreen wiper, *interior electric twin-blade indicators with automatic return, visor, driving mirror, interior lights, †blind to rear window, pile carpets, luggage accommodation and straps, pedal rubbers, draught and fume excluders, spare wheel and tyre, locks on doors, and those accessories shown on chassis specification. All fittings chromium plated. Triplex glass in windscreen, side and †rear windows.
†Not on 'Colwyn'.

With 10 h.p. FOUR Cylinder Engine.

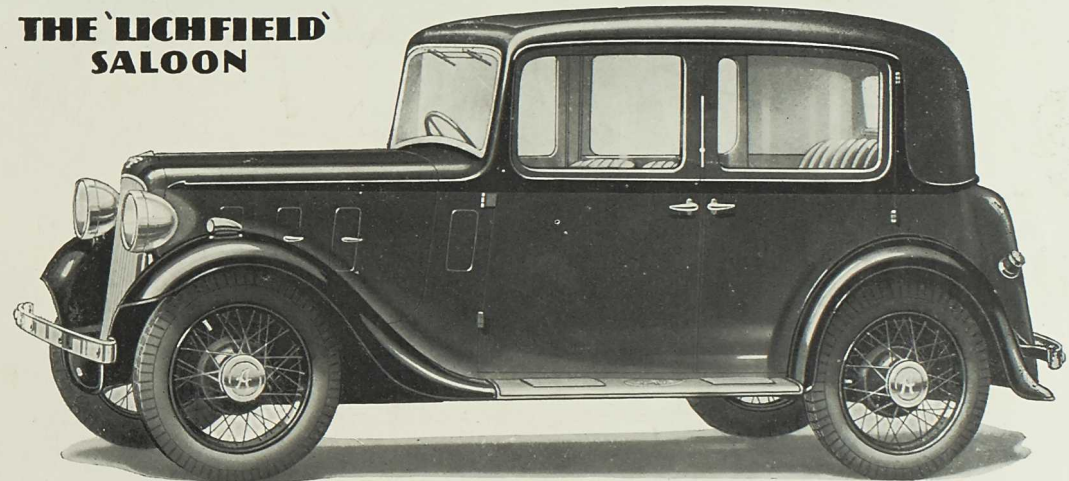
The elegant proportions of this modern Cabriolet create a favourable first impression which experience confirms. It provides four really commodious seats. The front seats are separately adjustable and tilt forward, the doors are very wide, and entrance to the rear seats is easy. The roof, thoroughly weatherproof, is quickly operated, and can be secured in any of three positions. The spare wheel is carried enclosed at the rear of the car, and the hinged cover drops to act as a luggage carrier.

'COLWYN' Cabriolet - £178

Price at Works.



THE 'LICHFIELD' SALOON



WITH 10 h.p. FOUR Cylinder Engine.

Smart in appearance and performance, very economical and reliable, the Lichfield saloon provides generous accommodation for four persons; with ample head, elbow and leg room. Because the Lichfield carries its load within the wheelbase, it corners well, does not sway, and is very handy to control. A Pytchley sliding roof is fitted.

The illuminated instruments are grouped opposite the driver, the left half of the fascia board contains a compartment for parcels, and the controls are very conveniently placed. There is a fixed head saloon with less expensive furnishings and without items*.

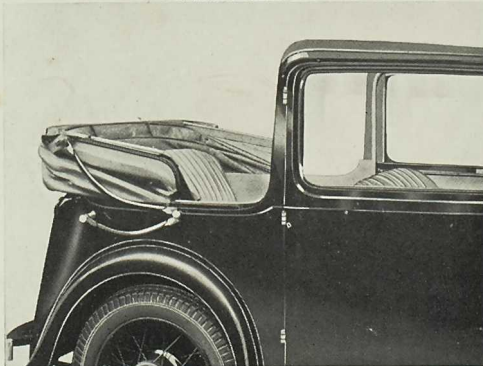
'LICHFIELD' De Luxe Saloon - - - £175

'LICHFIELD' Fixed Head Saloon - - - £158

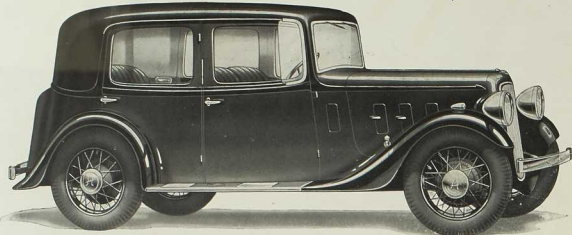
Prices at Works.

Above, luggage carrier lowered on 'Lichfield' Saloon, showing concealed spare wheel.

On left, hood of cabriolet fully lowered.



The 'Eighteen & Sixteen'



THE 'WESTMINSTER' Saloon

FOR THIS MODEL THERE IS THE CHOICE of either an 18 h.p. or 16 h.p. Six Cylinder Engine. It is mounted on a short wheelbase chassis.

The graceful appearance of the Westminster is very attractive. It is a five-seater saloon, with four windows. It has a Pynchley sliding roof and all seats are adjustable. The doors and windows are of more than ordinary width. The rear doors are hinged to the central pillar, and when opened, carry with them a mud shield which covers the front half of the rear mudwing. Thus clothing is not soiled when the rear compartment is entered.

With Eighteen h.p. engine - **£348**

With Sixteen h.p. Engine - **£338**

With Hayes Self-selector Transmission, £50 extra. Prices at Works

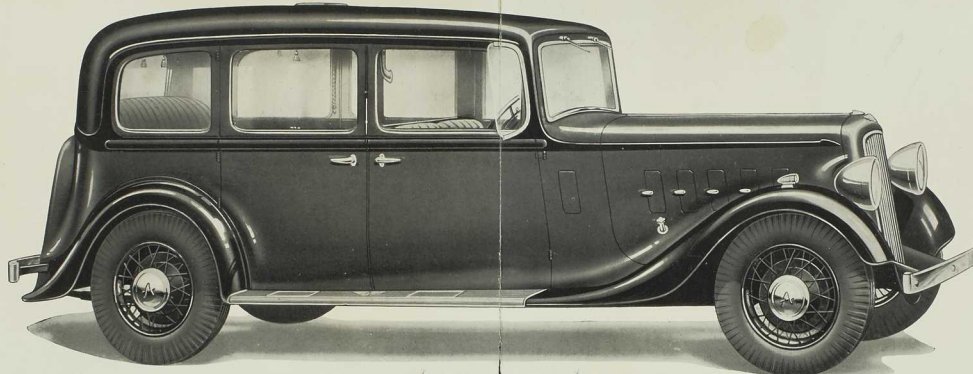
DEPENDABLE AUSTIN INVESTMENTS

The 'Twenty'

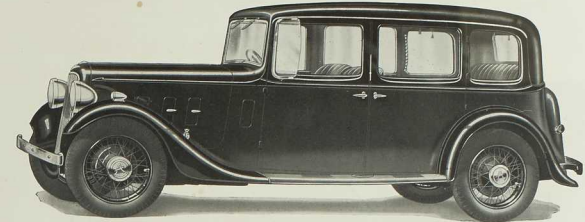
THE 'MAYFAIR' Limousine or Landaulet

A TWENTY H.P. SEVEN-SEATER MOTOR CARRIAGE distinguished by its dignity and elegance, built for luxurious comfort, and beautifully furnished in the best quality and style. Very spacious interior, wide doors and low floor ensure ready access. A movable Triplex glass partition secures privacy when the car is chauffeur driven, and an electric telephone communicates with the driver. The Limousine has a fixed roof. The hood of the Landaulet model is easily lowered.

£650
Price at Works.



The 'Eighteen & Sixteen'



THE 'YORK' Saloon

THERE IS A CHOICE OF EITHER 18 h.p. or 16 h.p. Six Cylinder Engine.

Mounted upon a long wheelbase chassis this model has a spacious interior. Two occasional seats (supplied at an extra cost of £7-10-0) increase the ample seating accommodation from five to seven.

A Pynchley sliding roof, wide doors, large windows, a low floor, front seats separately adjustable, and variable rear seat position are among many aids to comfortable travel, and are some of the attractive features of this fine saloon car.

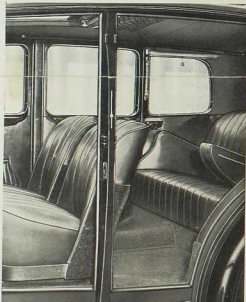
18 h.p. engine **£328** 16 h.p. engine **£318**

'York' Saloon - **£338** £328

'Chalfont' Saloon with division and fixed roof **£338** £328

'Hertford' Saloon - **£318** £298

With Hayes Self-selector Transmission, £50 extra. Prices at Works.



Saloon interior showing well upholstered seating.

EQUIPMENT 20 H.P. - 18 H.P. - 16 H.P.

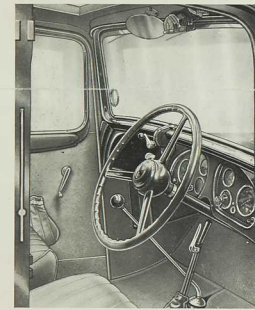
The cars can be finished to choice of Austin colours, and upholstered in best selected Hide, Bedford Cord or Moquette. There are occasional seats which fold away neatly, and side and central arm rests to the adjustable rear seat, an interior visor, side draught and rain deflectors, direction indicators with automatic return, electric twin blade windscreen wiper, driving mirror, interior lights, blinds to rear windows, foot rests, companion set, parcel net, rope pulls, electric telephone, pile carpets, draught and fume excluders, pedal rubbers, luggage accommodation and straps, enclosed spare wheel with tyre, locks on doors, and those accessories shown on chassis specification. All fittings chromium plated. Triplex glass in windscreen, side and rear windows.

† On 'Mayfair' and 'Chalfont'

‡ at extra cost on 'York' and 'Chalfont'

* Not in rear window of Landaulet

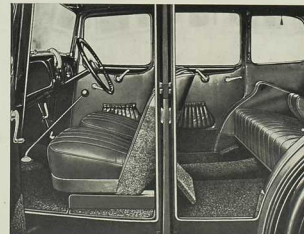
The Fifteen-Nine, Thirteen-Nine and Eleven-Nine



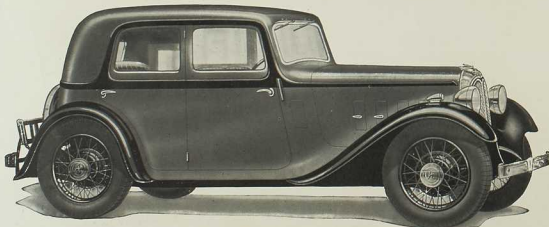
Interior of front compartment showing ease of control.



Front compartment of 'Kempton' Sports Saloon.



Interior of Light-Twelve 'Ascot' Saloon.



THE 'KEMPTON' Sports Saloon

THERE IS A CHOICE OF TWO SIX CYLINDER ENGINES, 15.9 or 13.9 h.p.

A swift, graceful saloon car whose smart appearance is matched by its performance. The front seats are independently adjustable. The pneumatic rear seating assures comfort and the Pynchley sliding roof provides for "any weather" travel.

Both engines are of the sports type, designed for high revolutions and road speed. High-compression cylinder head, high-lift camshaft, etc.

B.H.P. 15.9 engine 41 at 3,800 r.p.m.; 13.9 engine 37 at 3,800 r.p.m. Gear ratios: 18.26, 11.88, 7.59, and 5.5 to 1.

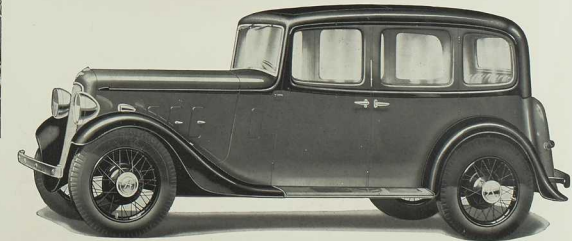
15.9 h.p. engine **£305** 13.9 h.p. engine **£295**
Prices at Works.

Equipment

The cars can be finished to choice of Austin colours and upholstered in "best selected Hide, Bedford Cord or Moquette. There are direction indicators with automatic return, electric twin blade windscreen wiper, interior visor, driving mirror, interior lights, blind to rear window, foot rests, side and centre arm rests, ash trays, parcel net, rope pulls, pile carpets, draught and fume excluders, pedal rubbers, luggage carrier and straps, spare wheel and tyre, locks on doors, and those accessories shown on chassis specification. All fittings chromium plated. Triplex glass in windscreen, side and rear windows.

† Not on 'Kempton'

* Not on Fixed Head Saloon



THE 'ASCOT' Saloon

THERE IS A CHOICE OF THREE ENGINES, 15.9 or 13.9 h.p. Six Cylinder, or 11.9 h.p. Four Cylinder. A graceful four-seater saloon having a Pynchley sliding roof. There is plenty of head, elbow and leg room, and large windows ensuring good visibility, deep full upholstery, and many accessories to comfortable travel. Wide doors and a low floor facilitate entrance. The illuminated instrument board faces the driver, and the controls are all conveniently placed. The fixed head saloon is less expensively furnished and is without those items marked* in the equipment.

De Luxe Saloon 15.9 h.p. 6-cyl. engine **£235** 13.9 h.p. 6-cyl. engine **£225** 11.9 h.p. 4-cyl. engine **£208**
Fixed Head Saloon **£215** **£205** **£188**
Prices at Works. Prices at Works. Prices at Works.

SPECIFICATIONS

	R.A.C. Rating	Tax	Bore	Stroke	Capacity	Cooling	Transmission	Top Gear Ratio	Steering	Brakes	Tyre Sizes (Saloons)	Track	Wheel-base	Maximum Width (Saloon)	Maximum Length (Saloon)
SEVEN 4-Cylinder	7.8	£6	2.2 in. 56 mm.	3 in. 76 mm.	45.6 c. in. 747.5 c.c.	Thermo-Syphon	Four-speeds forward. Synchronesh engagement for second, third, and top gears on all models.	5.25	Worm & Worm-wheel	Hand and foot. Mechanical.	4.00 × 17	3' 4" 1016 mm. in front 3' 7" 1092 mm. at rear	6' 9" 2057 mm.	4' 3"	10' 7"
TEN-FOUR 4-Cylinder	9.996	£7-10	2.4995 in. 63.5 mm.	3.5 in. 89 mm.	68.7 c. in. 1125 c.c.	Thermo-Syphon		5.25	Worm & Worm-wheel		4.50 × 18	3' 9" 1143 mm.	7' 9" 2361 mm.	4' 7"	11' 7"
LIGHT-TWELVE 4-Cylinder	11.9	£9	2.73 in. 69.35 mm.	4 in. 101.6 mm.	93.6 c. in. 1535 c.c.	Thermo-Syphon		5	Improved Worm & Sector		4.75 × 19	4' 2" 1270 mm.	8' 10" 2694 mm.	5' 1½"	13' 2"
TWELVE-SIX 6-Cylinder	13.956	£10-10	2.41 in. 61.25 mm.	3.335 in.	91.2 c. in. 1496 c.c.	Thermo-Syphon		5.5	Improved Worm & Sector	4.75 × 19	4' 2" 1270 mm.	8' 10" 2694 mm.	5' 2"	13' 2"	
	15.9	£12	2.58 in. 65.5 mm.	84.63 mm.	104.4 c. in. 1711 c.c.										
SIXTEEN-EIGHTEEN 6-Cylinder	15.9	£12	2.58 in. 65.5 mm.	4.375 in.	137 c. in. 2249 c.c.	Pump		5.11	Marles Weller	Girling	5.25 × 19	4' 8" 1422 mm.	9' 4" 2844 mm. or 10' 0" 3048 mm.	5' 8½"	14' 0" or 14' 8"
	17.9	£13-10	2.73 in. 69.35 mm.	111 mm.	153.7 c. in. 2510 c.c.										
TWENTY 6-Cylinder	23.5	£18	3.125 in. 79.5 mm.	4.5 in. 114.5 mm.	207 c. in. 3400 c.c.	Pump	4.67	Marles Weller	Girling	6 × 18	4' 9½" 1460 mm.	11' 4" 3454 mm.	5' 10½"	16' 7"	

CHASSIS EQUIPMENT

Hand starter switch, (*) Chromium plated dip and switch head lamps with foot control; side lamps; combined stop and tail lamp; (†) bumpers front and rear; (‡) "Jackall" jacks; carburettor air strangler and throttle control; (§) clock; electric petrol gauge; magnetic speedometer; (¶) dual electric horns; luggage accommodation; (§) hydraulic shock absorbers; number plates; spare wheel and tyre. Tools are securely stowed in special compartments.

(*) Black with chromium rims on Seven Fixed Head Saloon.
(†) Not on Seven Open Models or Seven, Ten-Four, or Light Twelve Fixed Head Saloons.

(‡) Not on Seven, Ten-Four or Light Twelve Models.
(§) Not on Seven Models.